

euFIX Datasheet

euFIX DIN Adapters for FIBARO® Modules

FGD-212, FGR-222, FGS-212, FGS-213,
FGBHS-213, FGS-222 and FGS-223



The euFIX DIN Adapters are used to safely install the Fibaro® modules on DIN (TH35/TS35) type rail in the electrical switchboard. The examples of modules that can be placed in the switchboard include: switches for heaters, fans, sprinklers, valves and switches for infrastructure integration. For safety reasons use of the certified adapters in switchboards is forced by the law regulations in some European countries. For every Fibaro® module type an appropriate euFIX Adapter type is dedicated. The euFIX DIN Adapter consists of the standard DIN case and the base board with the screw terminals to connect the power and signal wires.



All euFIX adapters are available in 2 versions: with or without buttons. The micro-push-buttons S1 & S2 are used for control, diagnostics, inclusion of the module within the Z-Wave system or to remove it from the system without opening the adapter's case. Please note that the Fibaro® modules are not included and need to be purchased separately.

Technical Specification:

Supply voltage:

230 V AC +/-10%, 50–60 Hz

Load current:

no more than appropriate

Fibaro module limits

Dimensions:

34.8 x 87.3 x 64.7 mm

Width in TE module units:

2 TE modules

Conductor wires cross section:

max. 2.5 mm²

Maximum length of wires

connected to Sx, S1, S2 inputs:

10 m (20 m for R222, S212 & S222)

Operating temperature:

0°C to +50°C

Relative humidity:

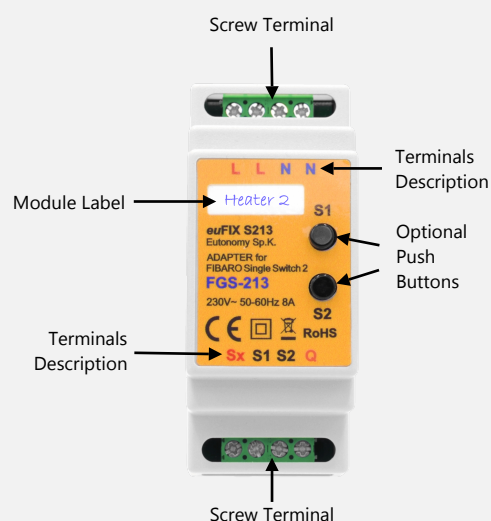
≤90%, no condensation.

Address:

Eutonomy Sp. z o.o. Sp. K.
ul. Piotrkowska 121/3a
90-430 Łódź, Poland

Contact:

www: www.eutonomy.com
email: sales@eutonomy.com
Tel.: +48 42 942 0730



The copyright to the content of this brochure is reserved exclusively for Eutonomy Sp. z o.o. Sp. K. This content must not be copied or republished without the permission of the copyright owner.

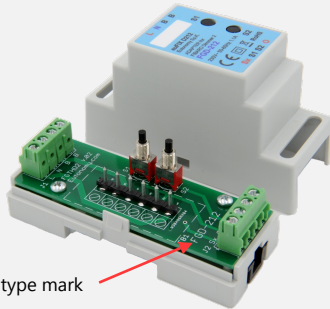
euFIX Adapter installation in 4 steps:

1. Open the euFIX Adapter's cover



Use a flat screwdriver to pry the cover latch

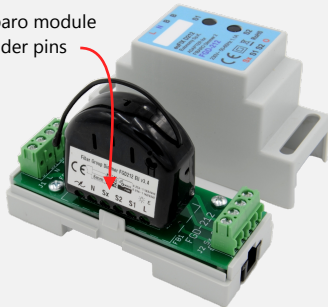
2. Check the Fibaro® module type on the board



Fibaro module type mark

3. Insert the Fibaro® module firmly on the header pins up to the full depth and tighten all screws

Put the Fibaro module on the header pins



4. Close the cover, mount the Adapter on the DIN rail, connect the cables and label the module.



Content of the packaging:

1. euFIX DIN Adapter.
2. Instruction manual.



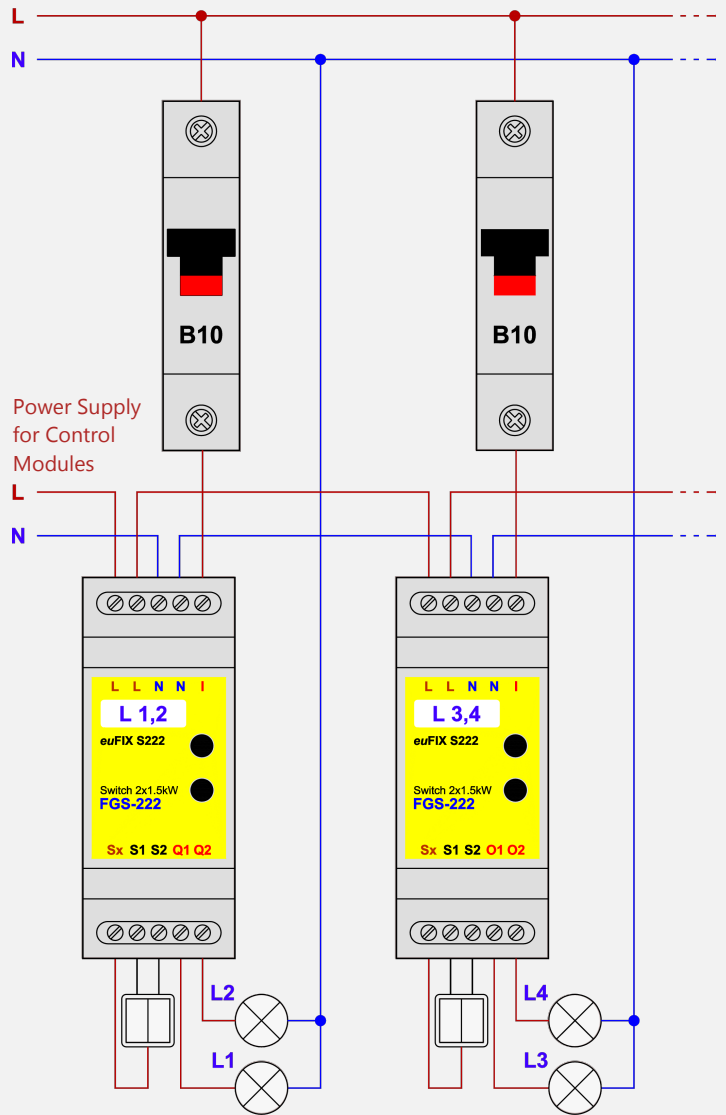
Where to order:

- Eutonomy Regional Distributor, see
- Fibaro® showrooms & sales network
- Other regions: <https://e-shop.eutonomy.com>

euFIX additional features:

The D212 Adapter (for Fibaro® Dimmer 2) has an additional terminals (marked B-B) where the optional Fibaro Bypass FGB-002 can be connected. Most euFIX Adapters have duplicated L and N power screw terminals that are internally connected by high-current bridges. In case of low load current the modules power supply can be cascaded, solving the problem of safe branching of phase wires. Nevertheless, at any point of the circuit, the load current must not exceed 10 A.

Power Supply for Load



EUTONOMY Distributor in your Region: